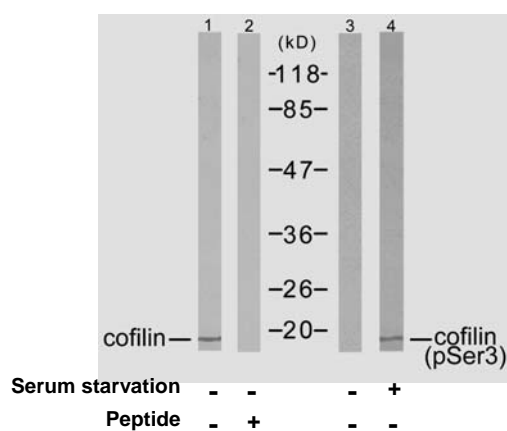


Rabbit anti Cofilin (pSer3)

- Catalog Number:** pAP11139
- Amount:** 100µl (for 10 Western Blotting)
- Form of Antibody:** Rabbit IgG in phosphate buffered saline (without Mg^{2+} and Ca^{2+}), pH 7.4, 150mM NaCl, 0.02% sodium azide and 50% glycerol.
- Storage/Stability:** Store at -20°C/1 year
- Immunogen:** The antiserum was produced against synthesized phosphopeptide derived from human cofilin around the phosphorylation site of serine 3 (M-A-S^P-G-V).
- Purification:** The antibody was affinity-purified from rabbit antiserum by affinity-chromatography using epitope-specific phosphopeptide. The antibody against non-phosphopeptide was removed by chromatography using non-phosphopeptide corresponding to the phosphorylation site.
- Specificity/Sensitivity:** cofilin (phospho-Ser3) antibody detects endogenous levels of cofilin only when phosphorylated at serine 3.
- Reactivity:** Human, Mouse, Rat
- Applications:** WB: 1:1000
- Swiss-Prot No. :** P23528
- References:** Kobayashi M, et al. (2006) EMBO J 25(4): 713-26.
Wang Y, et al. (2005) Biol Chem 280(13): 12683-9.
Smith-Beckerman DM, et al. (2005) Mol Cell Proteomics: 156-68.



Western blot analysis of extracts from COLO205 cells using cofilin (Ab-3) antibody (AP21164, Lane 1 and 2) and cofilin (phospho-Ser3) antibody (pAP11139, Lane 3 and 4).

For Research Use Only

Contact & Ordering Information: Angio-Proteomie, 11 Park Drive, Suite 12, Boston, MA 02215, USA. Fax: (480) 247-4337, angioproteomie@gmail.com